

A hand is shown holding a clear glass tumbler. The background is a vibrant, abstract geometric pattern consisting of overlapping lines in shades of green and red, creating a grid-like structure. The lighting is dramatic, highlighting the edges of the glass and the texture of the hand.

Kleuren stof en leder

# kleuren

X

100% pc acryl - 20.000 Martindale



X 103



X 108



X 114

B4

100% polypropyleen - 270g/m<sup>2</sup> - 40.000 Martindale - EN 1021 1+2



B4 09



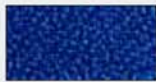
B4 24



B4 31



B4 32



B4 01



B4 33



B4 05



B4 29

BN

100% polyester - 250g/m<sup>2</sup> - 60.000 Martindale - EN 12947-2 - EN 1021 1+2



BN 01



BN 04



BN 13



BN 12



BN 10



BN 02



BN 05



BN 07

CA

100% kanecaron - 26.000 Martindale



CA 09



CA 06



CA 04



CA 01



CA 08



CA 02

K1

100% trevira cs - 40.000 Martindale



K 39



K 61



K 38



K 37



K 46



K 33



K 32



K 47



K 64



K 48



K 70

KM

100% trevira cs - 40.000 Martindale



KM 01



KM 02



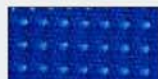
KM 03



KM 06



KM 05



KM 04



KM 07



KM 08

# Z

64% katoen / 36% polyurethaan - 65.000 Martindale



Z 11      Z 15      Z 10      Z 14



Z 12      Z 21      Z 33      Z 19

# AB

100% Xtreme Fr® - 310 g/m<sup>2</sup> - 100.000 Martindale - EN ISO 12947-2 - brandvertragend klasse 1



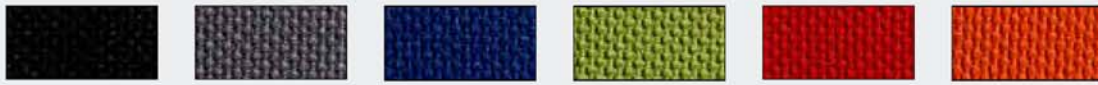
AB 03      AB 38      AB 12      AB 15      AB 10      AB 04



AB 13      AB 37      AB 14      AB 16      AB 22

# TE

100% PL FR Trevira CS / 70.000 Martindale / Brandwerend EN 1021-1 en 1021-2



TE 01      TE 02      TE 03      TE 04      TE 05      TE 06



# IP

100% polyester FR Trevira CS stretch / 50.000 Martindale



IP 01      IP 05      IP 04      IP 09      IP 02      IP 03



IP 11      IP 08      IP 06      IP 07      IP 10

# AP

100% PA - 230g/m<sup>2</sup> - 20.000 Martindale



AP 03      AP 06      AP 07      AP 02      AP 04      AP 08



# C

100% zuiver scheerwol - 560 g/m<sup>2</sup> - 50.000 Martindale - EN ISO 12947-2 - 10jaar garantie- EN ISO 12945-2



C 01      C 08      C 02      C 03      C 12      C 13



C 15      C 29      C 04      C 26      C 10      C 09

# kleuren

## IL



91% zuiver wol, 7% nylon en 2% polyester / 100.00 Martindale / Brandwerend EN 1021-1 en 1021-2



IL 01



IL 02



IL 03



IL 04



IL 05



IL 06

## Mesh

70% PVC 30% PES / 565 g/m2



10



11



12



15

## Mesh

Camaleont

100% PES Trevira CS / brandwerend klasse 1 – Din 4102



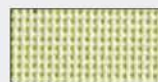
14



16



13



18



zwart



grijs



## N

Kunstleder 83% pvc - 17% polyester



N 01



N 29



N 23



N 30



N 33



N 22



N 27



N 35



N 34



N 32



N 28



N 15



N 12

## ZR

Kunstleder, 54,2% PU, 26,3% PES, 19,5% katoen / 51.200 Martindale / Brandwerend



ZR 01



ZR 03



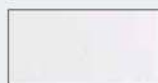
ZR 05



ZR 04



ZR 02



ZR 15



ZR 06



ZR 07

## S

Leder



S 01



S 29



S 23



S 30



S 33



S 22



S 27



S 35



S 34



S 32



S 28



S 15



S 12

# kleuren

## TS

Fijn leder



TS 01



TS 24



TS 23



TS 22



TS 07



TS 11



TS 14



TS 02



TS 03



TS 17



TS 09



TS 16



TS 05



TS 15

## MS

Leder



MS 01



MS 06



MS 03



MS 04



MS 07



MS 08



MS 02



MS 15

## TC

45% PL - 20% PA - 8% EA - 27% PU - 50.000 Martindale



TC 01



TC 08



TC 17



TC 02



TC 09



TC 15



TC 10



## CU

Leder



CU 01



CU 02

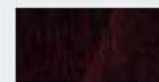
## Hout



Licht beuken



Kersen



Wengé



Black aniline



## At

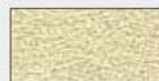
100% polyester - 40.000 Martindale - EN ISO 12947-2



AT 1



AT 2



AT 3



AT 4



AT 5



AT 6



AT 7



AT 8



AT 9



AT 10



AT 11



AT 12